

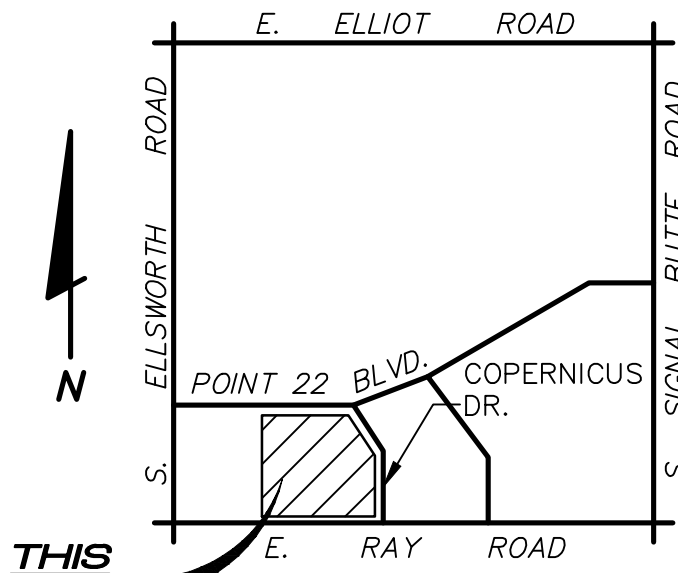
OFFSITE IMPROVEMENT PLANS
FOR
COPERNICUS DRIVE
FOR
QUEEN CREEK HIGH SCHOOL-EASTMARK CAMPUS

SITE ADDRESS: 9560 EAST RAY ROAD
MESA, ARIZONA 85212

FOR
QUEEN CREEK UNIFIED SCHOOL DISTRICT #95
20217 E. CHANDLER HEIGHTS ROAD
QUEEN CREEK, ARIZONA 85142
PHONE: (480) 987-5980

SHEET INDEX:

- OP-1 COVER SHEET
OP-2 NOTES SHEET
OP-3 OFFSITE PAVING PLAN
OP-4 OFFSITE PAVING PLAN
OP-5 OFFSITE PAVING PLAN
SS-1 SIGNAGE AND STRIPING PLAN COVERSHEET
SS-2 SIGNAGE AND STRIPING PLAN
SS-3 SIGNAGE AND STRIPING PLAN
SL1 STREET LIGHT PLAN COVER SHEET
SL2 STREET LIGHT PLAN
SL3 STREET LIGHT PLAN
PH-1 PHOTOMETRICS PLAN
L-100 LANDSCAPE GENERAL NOTES
L-101 LANDSCAPE PLAN
L-102 LANDSCAPE PLAN



VICINITY MAP
NOT TO SCALE

CIVIL ENGINEER:

HESS-ROUNTREE, INC.
9831 SOUTH 51ST STREET, SUITE C110
PHOENIX AZ. 85044
PHONE: (480) 496-0244
FAX: (480) 496-0094
CONTACT: PERCY MYRON, JR.
EMAIL: PERCYM@HESSROUNTREE.COM

OWNER/DEVELOPER:

QUEEN CREEK UNIFIED SCHOOL DISTRICT #95
20217 E. CHANDLER HEIGHTS ROAD
QUEEN CREEK, ARIZONA 85142
PHONE: (480) 987-5980

LANDSCAPE ARCHITECT

ARCORE GROUP, INC.
10201 S. 51ST STREET, SUITE A-240
PHOENIX, ARIZONA 85044
PHONE: (480) 704-755
FAX: (480) 704-7888
CONTRACT: YASH CHAUDHRY

ELEC. ENGINEER

WRIGHT ENGINEERING CORPORATION
165 E. CHILTON DRIVE
CHANDLER, ARIZONA 85225
PHONE: (480) 497-5829
FAX: (480) 497-75807
CONTRACT: TYREE NOE

SITE INFORMATION:

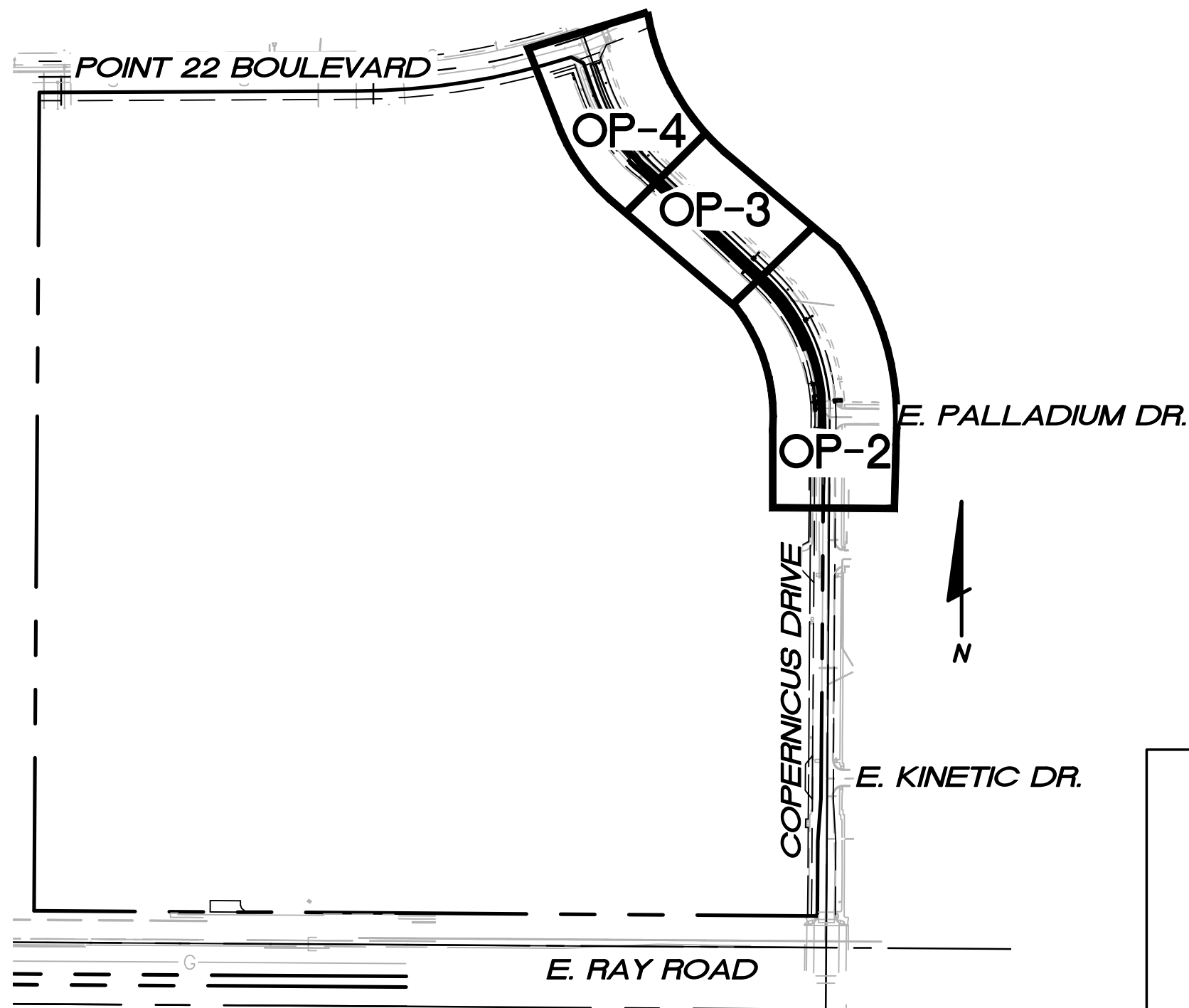
APN: 304-32-857

NOTES:

QUANTITIES ARE FOR CITY PERMIT PURPOSES
ONLY. CONTRACTOR SHALL VERIFY ALL QUANTITIES.

OFFSITE ESTIMATED QUANTITIES

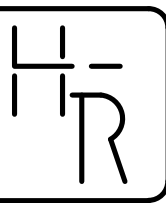
ITEM	DESCRIPTION	QUANTITIES
1.	EXISTING WATER METER BOX RELOCATION	2 EA
2.	A.C. PAVEMENT 3.5" A.C. (R-1/2 INCH) OVER 6" A.B.C. OVER COMPACTED SUBGRADE.	917 SY
3.	A.C. PAVEMENT REMOVAL AND REPLACEMENT.	198 LF
4.	18" WIDE CONCRETE RIBBON CURB.	49 LF
5.	CONCRETE VERTICAL CURB AND GUTTER.	723 LF
6.	CONCRETE SIDEWALK.	2685 LF
7.	CONSTRUCT SIDEWALK RAMP (C.O.M. S.D. NO. M-44.05)	2 EA
8.	CONCRETE DRIVEWAY ENTRANCE (C.O.M. S.D. NO. 40.02)	1 EA
9.	SIGN POST AND BASE	6 EA
10.	STREET LIGHTS	4 EA



SHEET INDEX MAP
NOT TO SCALE

CITY OF MESA
APPROVAL STAMPS

Area for City of Mesa approval stamps.



HESS - ROUNTREE, INC.
CONSULTING ENGINEERS & LAND SURVEYORS
9831 SOUTH 51ST STREET, SUITE C110
PHOENIX, ARIZONA 85044 (480)496-0244

DES. **PMU** DRN. **ANM** CKD **DRO** JOB NO. **1708-05C**

DESIGN ENGINEER'S
NOTES TO CONTRACTOR:

- NOTHING CONTAINED IN THE CONTRACT DOCUMENTS SHALL CREATE, NOR SHALL BE CONSTRUED TO CREATE, ANY CONTRACTUAL RELATIONSHIP BETWEEN THE DESIGN ENGINEER AND THE CONTRACTOR OR ANY SUBCONTRACTOR.
- THE DESIGN ENGINEER WILL NOT BE RESPONSIBLE FOR CONSTRUCTION MEANS, METHODS, TECHNIQUES, SEQUENCES OR PROCEDURES OR FOR SAFETY PRECAUTIONS OR PROGRAMS UTILIZED IN CONNECTION WITH THE WORK, THIS IS THE CONTRACTOR'S SOLE RESPONSIBILITY. THE DESIGN ENGINEER WILL NOT BE RESPONSIBLE FOR THE CONTRACTOR'S FAILURE TO CARRY OUT THE WORK IN ACCORDANCE WITH THE CONTRACT DOCUMENTS.
- THE CONTRACTOR SHALL PROVIDE ADEQUATE MEANS OF CLEANING TRUCKS AND/OR OTHER EQUIPMENT OF MUD PRIOR TO ENTERING PUBLIC STREETS, AND IT IS THE CONTRACTOR'S RESPONSIBILITY TO CLEAN STREETS, ALLAY DUST, AND TO TAKE WHATEVER MEASURES ARE NECESSARY TO INSURE THAT ALL ROADWAYS AND ON SITE PARKING LOTS/FIRE LANES ARE MAINTAINED IN A CLEAN, MUD AND DUST-FREE CONDITION AT ALL TIMES.
- IT SHALL BE THE CONTRACTOR'S RESPONSIBILITY TO CONTACT THE BLUE STAKE CENTER TWO WORKING DAYS PRIOR TO ANY EXCAVATION. THE UNDERGROUND UTILITY LOCATIONS AS SHOWN HEREON ARE BASED ON THE BEST INFORMATION AVAILABLE FROM UTILITY RECORDS AND OTHER DATA AS SUPPLIED TO THIS DESIGN ENGINEER. THERE MAY BE OTHER UNDERGROUND UTILITY LINES, SERVICE LINES AND STRUCTURES PRESENT IN THE SUBJECT AREA. CONTRACTOR SHALL INCLUDE IN HIS BID THE COST OF HIRING AN UNDERGROUND UTILITY LOCATING SERVICE FOR THE PURPOSE OF LOCATING ALL UNDERGROUND UTILITIES. CONTRACTOR WILL COORDINATE WITH THE OWNER AND ARCHITECT TO DETERMINE WHETHER SAID UTILITIES ARE TO BE ABANDONED OR PROTECTED FROM DAMAGE.
- THE ENGINEER MAKES NO REPRESENTATION OR GUARANTEE REGARDING THE EARTHWORK QUANTITIES OR THAT THE EARTHWORK FOR THIS PROJECT WILL BALANCE DUE TO THE VARYING FIELD CONDITIONS, CHANGING, SOIL TYPES, ALLOWABLE CONSTRUCTION TOLERANCES AND CONSTRUCTION METHODS THAT ARE BEYOND THE CONTROL OF THE ENGINEER. PRIOR TO BIDDING THE WORK, THE CONTRACTOR SHALL THOROUGHLY SATISFY HIMSELF AS TO THE ACTUAL CONDITIONS, EARTHWORK QUANTITIES AND REQUIREMENTS OF THE WORK AND EXCESS OR DEFICIENCY THEREIN, ACTUAL OR RELATIVE.
- THE CONTRACTOR SHALL ADJUST ALL EXISTING AND NEW CLEANOUTS, WATER VALVE BOXES, MANHOLES, GAS VALVE BOXES, IRRIGATION BOXES, ETC. IN THE CONSTRUCTION AREA TO FINISH GRADE PER THE APPLICABLE MAG STANDARD DETAIL.
- ALL NEW UNDERGROUND FACILITIES/UTILITIES SHALL BE INSTALLED WITH A DETECTABLE UNDERGROUND LOCATION DEVICE. INSTALL A #18 INSULATED TRACER WIRE SECURELY ATTACHED TO EACH UTILITY AT 8- FEET ON CENTER. 12" OF TRACER WIRE SHALL BE ACCESSIBLE ABOVE GRADE AT THE TERMINATION AND SHALL BE SECURELY ATTACHED AT THAT POINT. THE CONTRACTOR SHALL INCLUDE ALL COSTS ASSOCIATED WITH THIS REQUIREMENT IN THEIR BID.

BENCHMARK:

FOUND CITY OF MESA BRASS TAG IN TOP OF CURB LOCATED AT THE NORTHWEST CORNER OF MERIDIAN ROAD AND WARNER ROAD.
ELEVATION=1481.30 (CITY OF MESA NAVD88 DATUM)
EQUATION TO SITE BENCHMARK
-2.43 FEET=
ELEVATION=1478.87

AS-BUILT CERTIFICATION

I HEREBY CERTIFY THAT THE "RECORD DRAWING" MEASUREMENTS AS SHOWN HEREON WERE MADE UNDER MY SUPERVISION OR AS NOTED, AND ARE CORRECT TO THE BEST OF MY KNOWLEDGE AND BELIEF.

REGISTERED LAND SURVEYOR _____ DATE _____
REGISTRATION NUMBER _____
COMPANY _____

OFFSITE PAVING PLAN - COVERSHEET

QUEEN CREEK UNIFIED SCHOOL DISTRICT #95

QUEEN CREEK HIGH SCHOOL-
COPERNICUS WIDENING

DRAWING STATUS	SHEET	OF	OP-1
1ST CITY SUBMITTAL			
DATE: 02-05-21	1	15	

THESE PLANS HAVE BEEN SUBMITTED TO THE FOLLOWING UTILITY COMPANIES AND THE WORK CONTAINED IN THESE PLANS HAS BEEN APPROVED BY THESE COMPANIES WITHIN THEIR AREA OF INTEREST. THE SIZE AND LOCATIONS, AS SHOWN OF THE GAS, TELEPHONE AND POWER LINES, AND CONNECTIONS AGREE WITH THE INFORMATION CONTAINED IN THE UTILITY COMPANY'S RECORDS. WHERE THE WORK TO BE DONE CONFLICTS WITH ANY OF THESE UTILITIES, THE CONFLICTS SHALL BE RESOLVED AS SPECIFIED IN THE SPECIAL PROVISIONS AND/OR AS OTHERWISE NOTED ON THESE PLANS. CONFLICTS ARISING DURING THE COURSE OF CONSTRUCTION FROM UNFORSEEN CIRCUMSTANCES SHALL BE REPORTED TO THE INTERESTED UTILITY COMPANY AND BE RESOLVED BY THEM AND THE DESIGN ENGINEER.

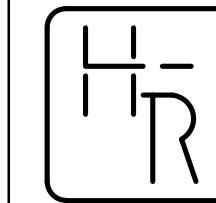
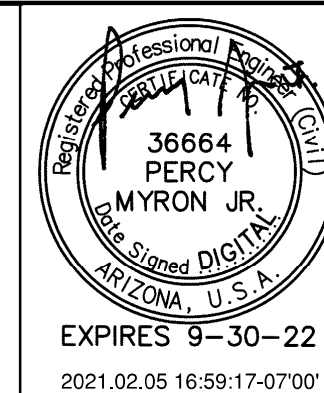
CITY OF MESA UTILITIES	CHRIS MEHAN CO. REPRESENTATIVE CONTACTED	2-9-21 DATE SUBMITTED
COX COMMUNICATIONS	USIC DISPATCH CENTER CO. REPRESENTATIVE CONTACTED	2-9-21 DATE SUBMITTED
CENTURLINK	USIC DISPATCH CENTER CO. REPRESENTATIVE CONTACTED	2-9-21 DATE SUBMITTED
SALT RIVER PROJECT	SRP BLUE STAKE CO. REPRESENTATIVE CONTACTED	2-9-21 DATE SUBMITTED
SOUTHWEST GAS	ELM LOCATING DISPATCH CO. REPRESENTATIVE CONTACTED	2-9-21 DATE SUBMITTED

NOTE:

THESE DRAWINGS ARE AN INSTRUMENT OF SERVICE ONLY AND ARE AND SHALL REMAIN THE EXCLUSIVE PROPERTY OF HESS-ROUNTREE, INC. NO REPRODUCTION OR OTHER USE SHALL BE MADE BY ANY PERSON OR FIRM OTHER THAN HESS-ROUNTREE, INC. OR THE CITY OF MESA WITHOUT EXPRESS PERMISSION OF HESS-ROUNTREE, INC. ANY UNAUTHORIZED USE SHALL VOID THE ENGINEER'S SEAL AND SIGNATURE HEREON AND NO PROFESSIONAL RESPONSIBILITY WILL REMAIN.

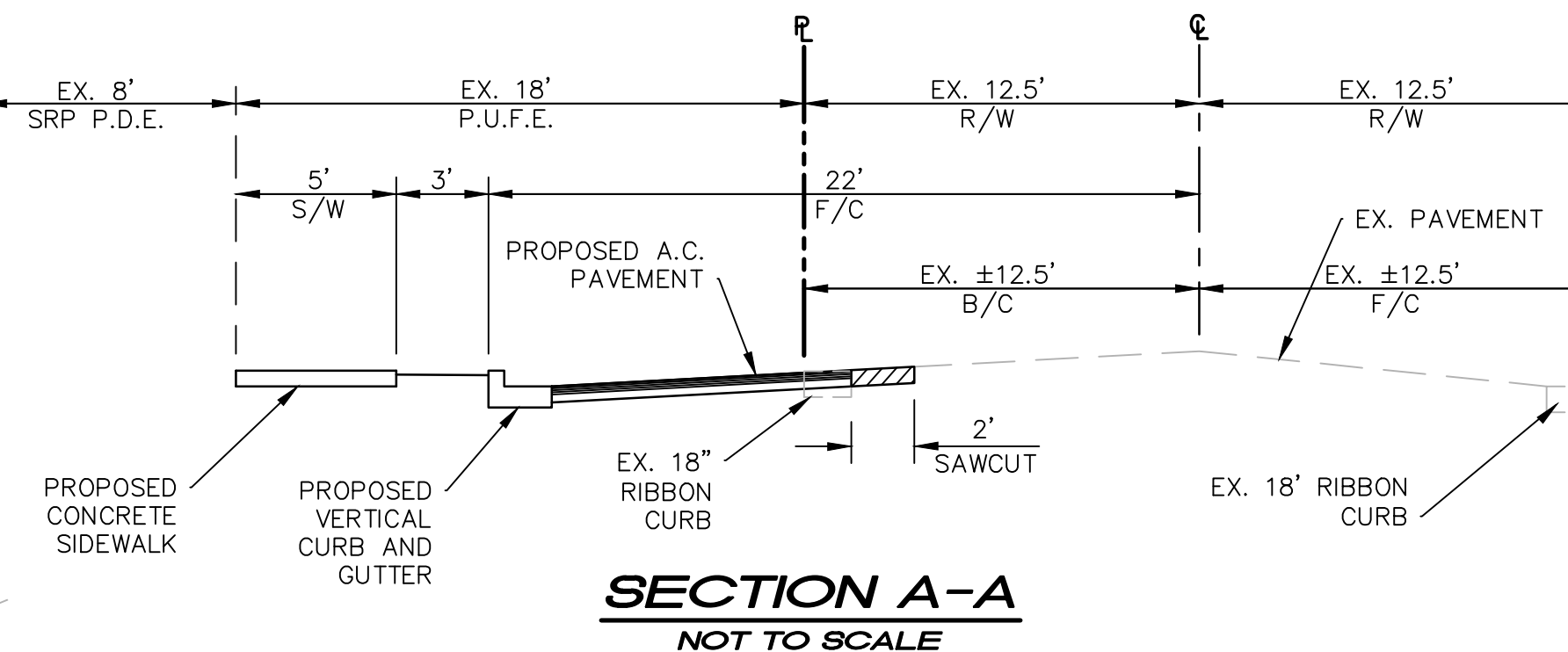
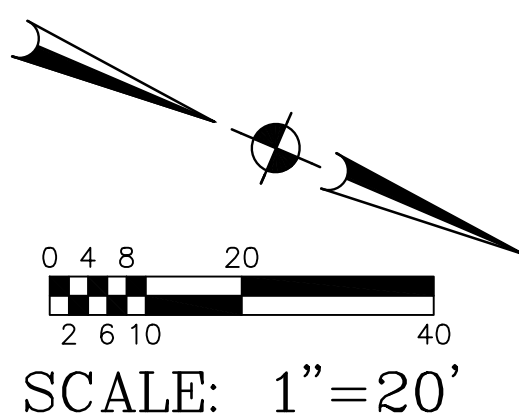
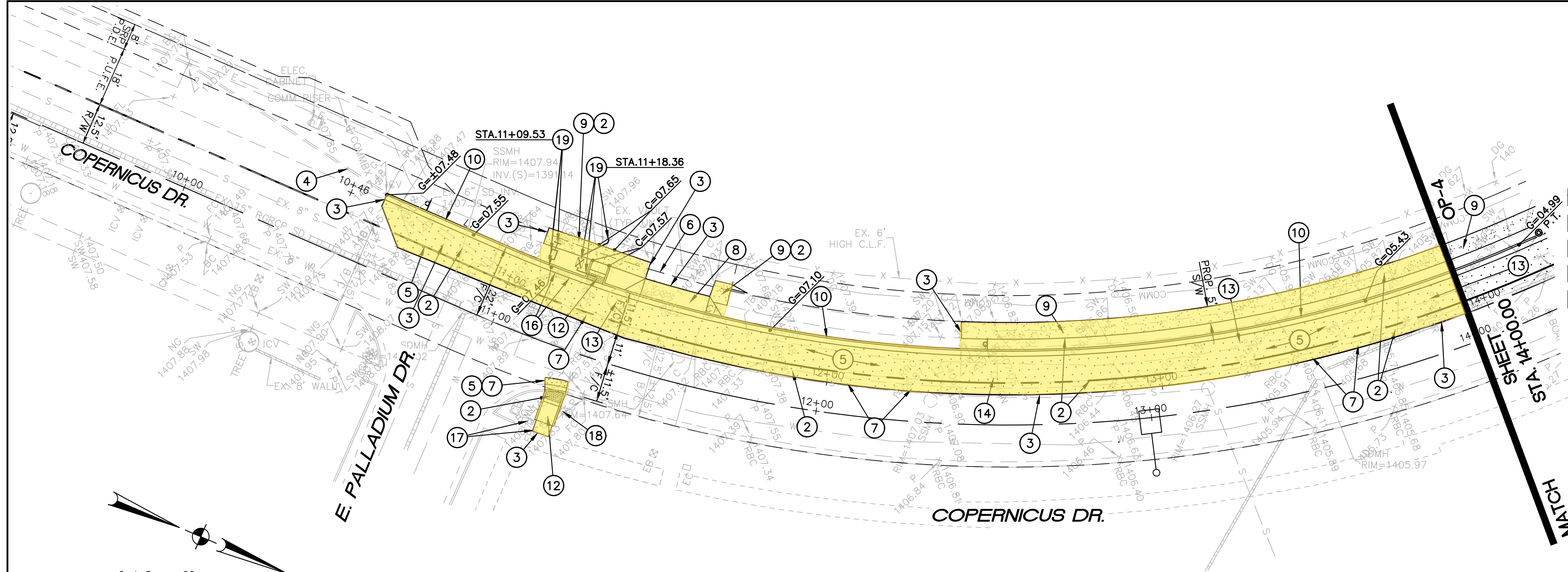


170805C001.DWG



HESS - ROUNTREE, INC.
CONSULTING ENGINEERS & LAND SURVEYORS
9831 SOUTH 51ST STREET, SUITE C110
PHOENIX, ARIZONA 85044 (480)496-0244

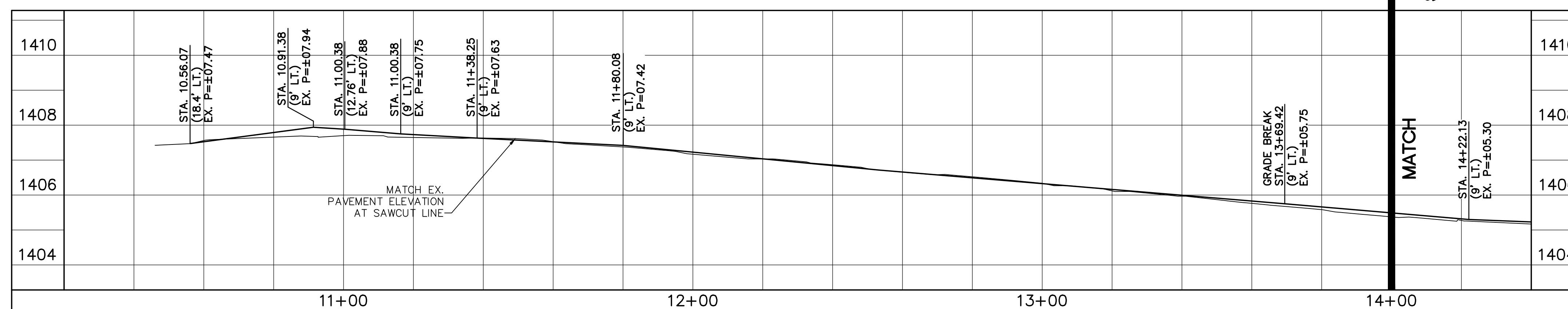
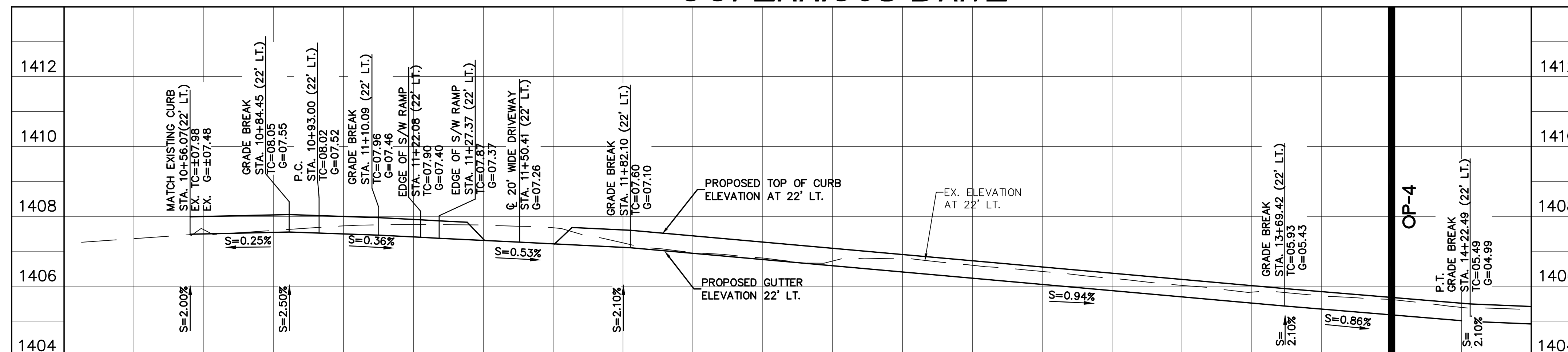
DES. **DRO** DRN. **ANM** CKD **DRO** JOB NO. **1708-05C**



OFFSITE PAVING CONSTRUCTION NOTES:

- INSTALL 18" WIDE CONCRETE RIBBON CURB (MAG STANDARD DETAIL NO 220-1, TYPE B MODIFIED).
- SAWCUT AND REMOVE EXISTING A.C. PAVEMENT, CONCRETE RIBBON CURB, CONCRETE VERTICAL CURB, GUTTER AND SIDEWALK AS REQUIRED FOR NEW CONSTRUCTION.
- MATCH EXISTING A.C. PAVEMENT, CONCRETE SINGLE CURB, CONCRETE VERTICAL CURB, GUTTER AND SIDEWALK ELEVATION AND LOCATION.
- EXISTING CONCRETE SINGLE CURB, RIBBON CURB OR CONCRETE VERTICAL CURB AND GUTTER TO REMAIN. PROTECT FROM DAMAGE.
- INSTALL ASPHALTIC CONCRETE PAVEMENT (3.5" A.C. (R-1/2") OVER 6" A.B.C. OVER COMPACTED SUBGRADE) PER CITY OF MESA STANDARD DETAIL NO. M-19-01.
- PROTECT EXISTING 7" THICK MAG AA CONCRETE PAVEMENT FROM DAMAGE.
- SAWCUT AND REMOVE A MINIMUM 2' OF EXSITING A.C. PAVEMENT.
- CONSTRUCT RESIDENTIAL DRIVEWAY ENTRANCE-TYPE 2 (DETACHED SIDEWALK). CITY OF MESA DETAIL NO. M-40.02.
- CONSTRUCT CONCRETE SIDEWALK (MAG STANDARD DETAIL NO. 230).
- INSTALL CONCRETE VERTICAL CURB AND GUTTER (MAG STANDARD DETAIL NO. 220-1, TYPE A).
- CONSTRUCT CURB TRANSITION (SEE DETAIL ON SHEET OP-5).
- INSTALL SIDEWALK RAMP TYPE D (CITY OF MESA STANDARD DETAIL NO. M-44.05). MODIFY TO BE 5' WIDE AND HAVE NO ROUNDED CORNERS AT CURB INTERSECTIONS WITH STREET CURBS.
- REMOVE EXISTING TREES, SHRUBS, LANDSCAPE MATERIAL AS REQUIRED FOR NEW CONSTRUCTION.
- REMOVE AND SALVAGE EXISTING SIGNS. REMOVE EXISTING POST, AND FOOTING. SEE SIGNAGE AND STRIPING PLANS FOR REINSTALLATION.
- REMOVE AND SALVAGE EXISTING ANGULAR RIP-RAP AS REQUIRED FOR REGRADING OF NEW SWALE. REGRADE SWALE TO THE ELEVATIONS INDICATED. REINSTALL ANGULAR RIP-RAP.
- REMOVE EXISTING CATCH BASIN, REMOVE EXISTING STORM DRAIN PIPE AS REQUIRED. INSTALL WATERTIGHT CAP.
- RELOCATE EXISTING ELECTRICAL BOXES AS REQUIRED FOR NEW CONSTRUCTION.
- PROTECT EXISTING STREET LIGHT POLE AND BASE FROM DAMAGE.
- RELOCATE EXISTING 2" WATER METER AND METER BOX FOR NEW CONSTRUCTION. REMOVE EXISTING 2" COPPER PIPE AND INSTALL NEW 2" COPPER PIPE (TYPE K) AS REQUIRED. RECONNECT TO EXISTING WATER LINE WITH NECESSARY AND APPROPRIATE FITTINGS.

COPERNICUS DRIVE

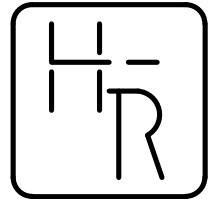


HORIZONTAL SCALE: 1"=20'
VERTICAL SCALE: 1"=2'



OFFSITE PAVING PLAN

QUEEN CREEK UNIFIED SCHOOL DISTRICT #95			
QUEEN CREEK HIGH SCHOOL- COPERNICUS WIDENING			
DRAWING STATUS	SHEET	OF	OP-3
1ST CITY SUBMITTAL			
DATE:	02-05-21	3	15

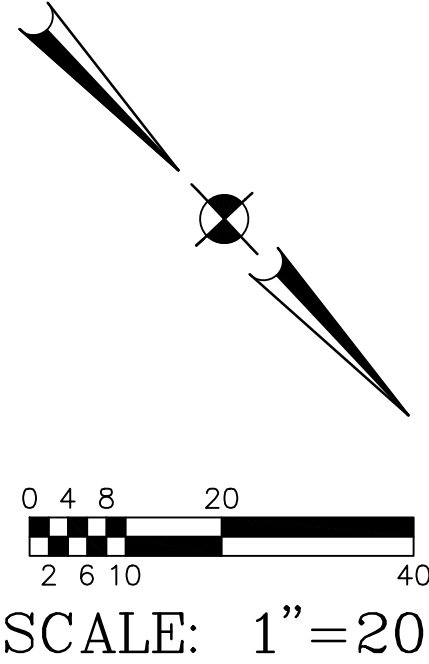
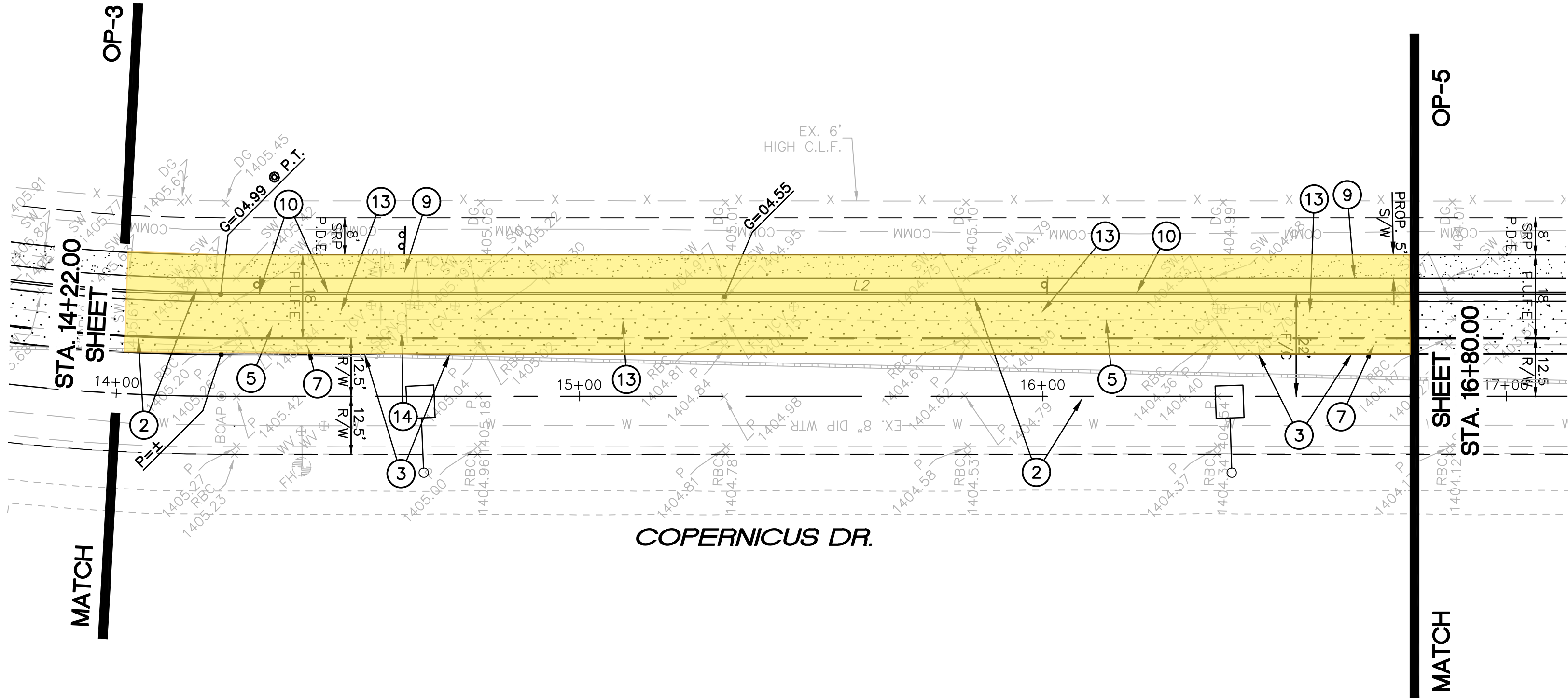


HESS — ROUNTREE, INC.
CONSULTING ENGINEERS & LAND SURVEYORS
9831 SOUTH 51ST STREET, SUITE C110
PHOENIX, ARIZONA 85044 (480)496-0244

DES. **DRO** DRN. **ANM** CKD **DRO** JOB NO. **1708-05C**

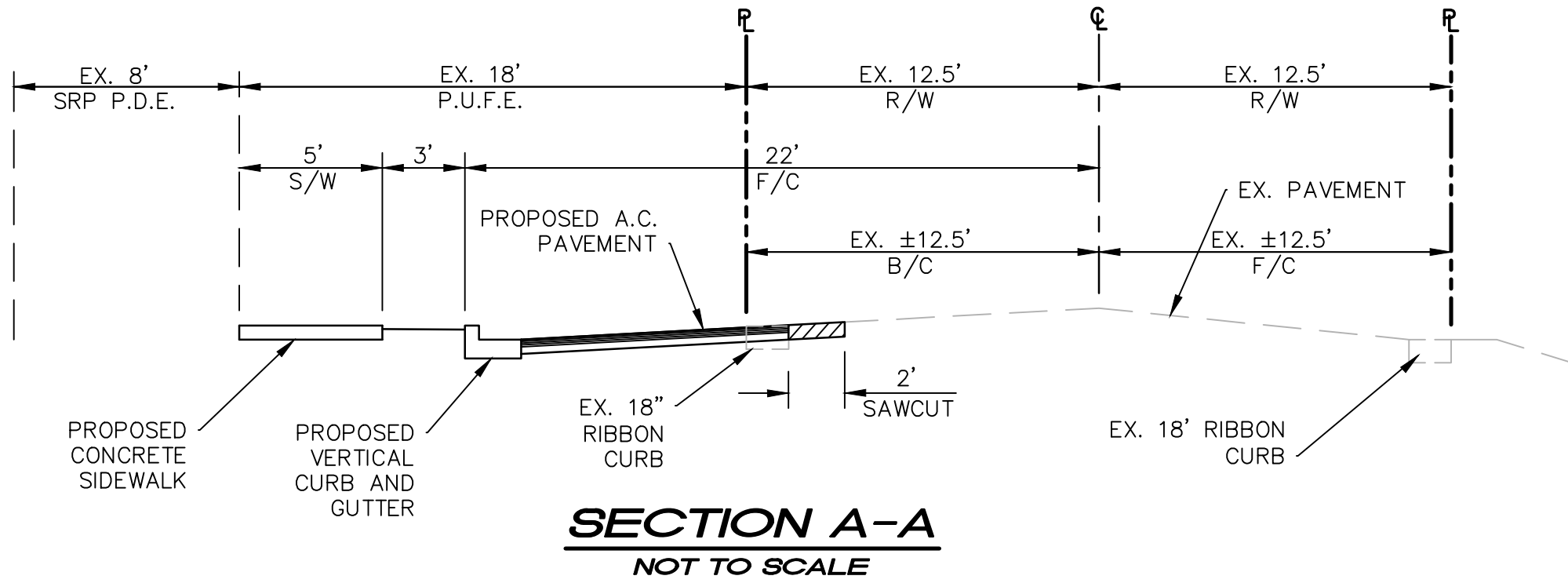
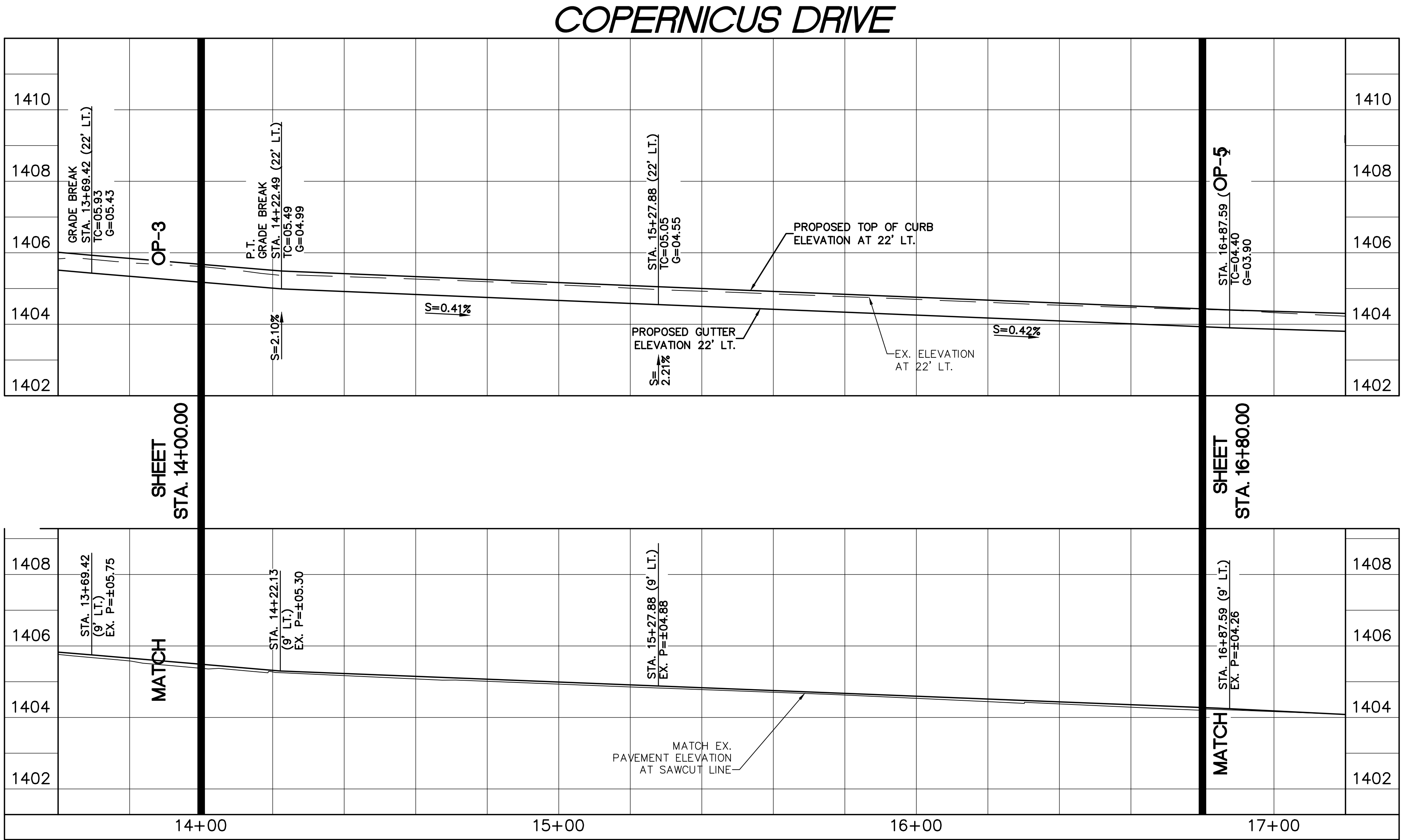
OFFSITE PAVING CONSTRUCTION NOTES:

1. INSTALL 18" WIDE CONCRETE RIBBON CURB (MAG STANDARD DETAIL NO 220-1, TYPE B MODIFIED).
2. SAWCUT AND REMOVE EXISTING A.C. PAVEMENT, CONCRETE RIBBON CURB, CONCRETE PAVEMENT, CONCRETE VERTICAL CURB, GUTTER AND SIDEWALK AS REQUIRED FOR NEW CONSTRUCTION.
3. MATCH EXISTING A.C. PAVEMENT, CONCRETE SINGLE CURB, CONCRETE VERTICAL CURB, GUTTER AND SIDEWALK ELEVATION AND LOCATION.
4. EXISTING CONCRETE SINGLE CURB, RIBBON CURB OR CONCRETE VERTICAL CURB AND GUTTER TO REMAIN. PROTECT FROM DAMAGE.
5. INSTALL ASPHALTIC CONCRETE PAVEMENT (3.5" A.C. (R-1/2") OVER 6" A.B.C. OVER COMPACTED SUBGRADE) PER CITY OF MESA STANDARD DETAIL NO. M-19-01.
6. PROTECT EXISTING 7" THICK MAG AA CONCRETE PAVEMENT FROM DAMAGE.
7. SAWCUT AND REMOVE A MINIMUM 2' OF EXSITING A.C. PAVEMENT.
8. CONSTRUCT RESIDENTIAL DRIVEWAY ENTRANCE-TYPE 2 (DETACHED SIDEWALK). CITY OF MESA DETAIL NO. M-40.02.
9. CONSTRUCT CONCRETE SIDEWALK (MAG STANDARD DETAIL NO. 230).
10. INSTALL CONCRETE VERTICAL CURB AND GUTTER (MAG STANDARD DETAIL NO. 220-1, TYPE A).
11. CONSTRUCT CURB TRANSITION (SEE DETAIL ON SHEET OP-5).
12. INSTALL SIDEWALK RAMP TYPE D (CITY OF MESA STANDARD DETAIL NO. M-44.05). MODIFY TO BE 5' WIDE AND HAVE NO ROUNDED CORNERS AT CURB INTERSECTIONS WITH STREET CURBS.
13. REMOVE EXISTING TREES, SHRUBS, LANDSCAPE MATERIAL AS REQUIRED FOR NEW CONSTRUCTION.
14. REMOVE AND SALVAGE EXISTING SIGNS. REMOVE EXISTING POST, AND FOOTING. SEE SIGNAGE AND STRIPING PLANS FOR REINSTALLATION.
15. REMOVE AND SALVAGE EXISTING ANGULAR RIP-RAP AS REQUIRED FOR REGRADING OF NEW SWALE. REGRADE SWALE TO THE ELEVATIONS INDICATED. REINSTALL ANGULAR RIP-RAP.
16. REMOVE EXISTING CATCH BASIN, REMOVE EXISTING STORM DRAIN PIPE AS REQUIRED. INSTALL WATERTIGHT CAP.
17. RELOCATE EXISTING ELECTRICAL BOXES AS REQUIRED FOR NEW CONSTRUCTION.
18. PROTECT EXISTING STREET LIGHT POLE AND BASE FROM DAMAGE.
19. RELOCATE EXISTING 2" WATER METER AND METER BOX FOR NEW CONSTRUCTION. REMOVE EXISTING 2" COPPER PIPE AND INSTALL NEW 2" COPPER PIPE (TYPE K) AS REQUIRED. RECONNECT TO EXISTING WATER LINE WITH NECESSARY AND APPROPRIATE FITTINGS.



Line Table		
Line #	Length	Direction
L1	36.94'	N00° 29' 40.20"E
L2	331.75'	N46° 48' 09.28"W

Curve Table			
Curve #	Length	Radius	Delta
C2	42.40'	417.89	005.81
C1	311.42'	377.61	047.25

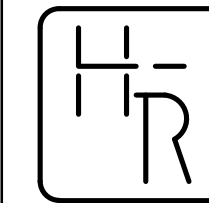
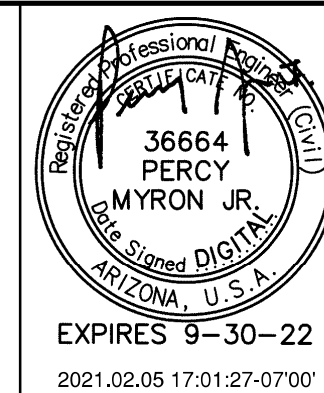


HORIZONTAL SCALE: 1"=20'
VERTICAL SCALE: 1"=2'



OFFSITE PAVING PLAN			
QUEEN CREEK UNIFIED SCHOOL DISTRICT #95			
QUEEN CREEK HIGH SCHOOL- COPERNICUS WIDENING			
DRAWING STATUS	SHEET	OF	OP-4
1ST CITY SUBMITTAL			
DATE: 02-05-21	4	15	

170805COP3.DWG

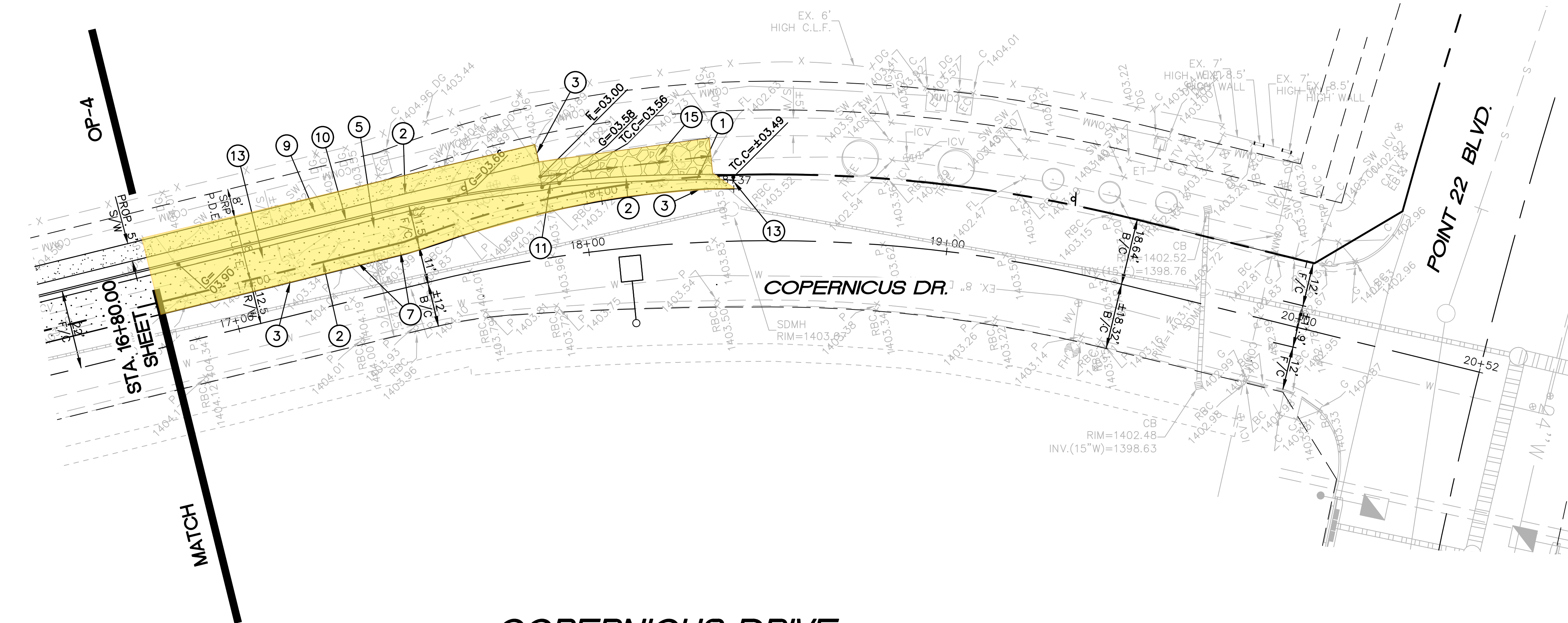
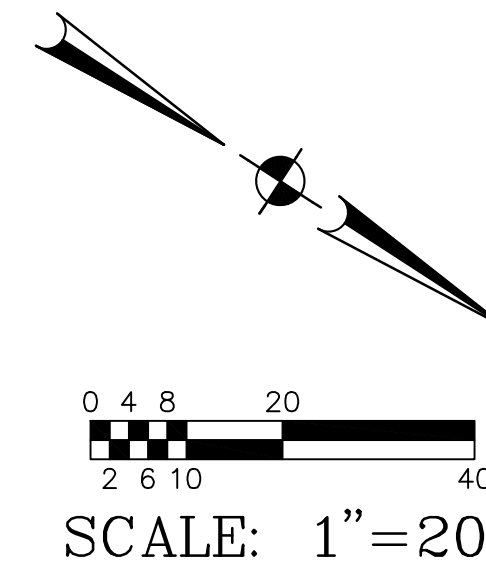


HESS - ROUNTREE, INC.
CONSULTING ENGINEERS & LAND SURVEYORS
9831 SOUTH 51ST STREET, SUITE C110
PHOENIX, ARIZONA 85044 (480)496-0244

DES. **DRO** DRN. **ANM** CKD **DRO** JOB NO. **1708-05C**

OFFSITE PAVING CONSTRUCTION NOTES:

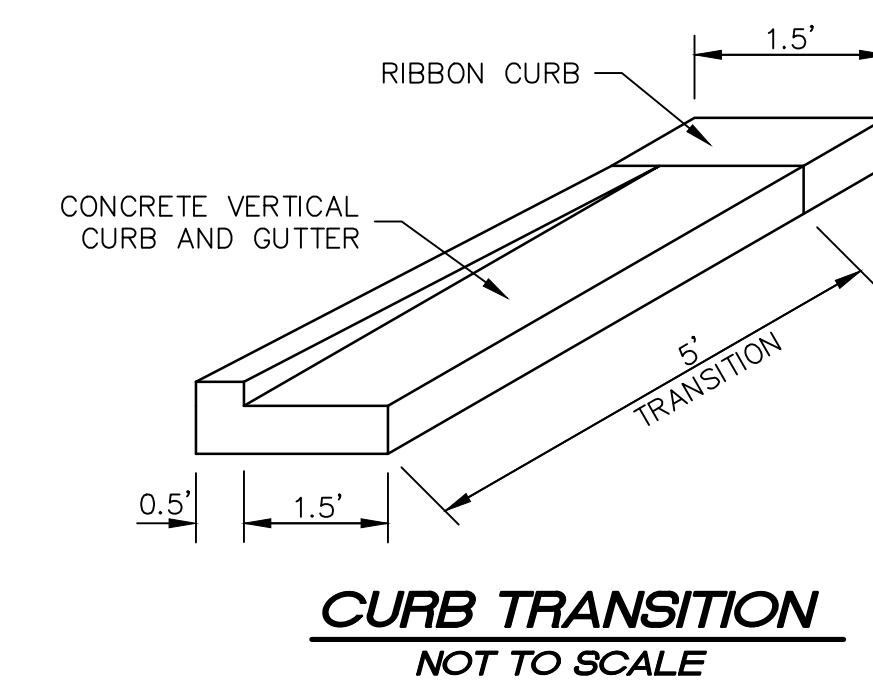
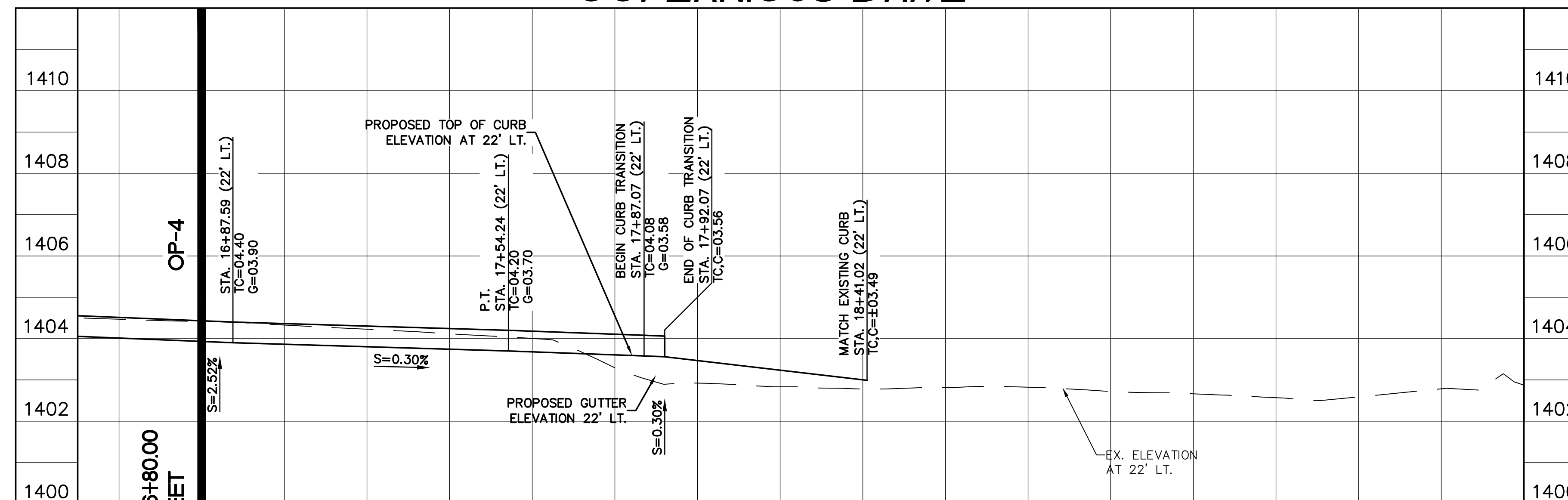
1. INSTALL 18" WIDE CONCRETE RIBBON CURB (MAG STANDARD DETAIL NO 220-1, TYPE B MODIFIED).
2. SAWCUT AND REMOVE EXISTING A.C. PAVEMENT, CONCRETE RIBBON CURB, CONCRETE PAVEMENT, CONCRETE VERTICAL CURB, GUTTER AND SIDEWALK AS REQUIRED FOR NEW CONSTRUCTION.
3. MATCH EXISTING A.C. PAVEMENT, CONCRETE SINGLE CURB, CONCRETE VERTICAL CURB, GUTTER AND SIDEWALK ELEVATION AND LOCATION.
4. EXISTING CONCRETE SINGLE CURB, RIBBON CURB OR CONCRETE VERTICAL CURB AND GUTTER TO REMAIN. PROTECT FROM DAMAGE.
5. INSTALL ASPHALTIC CONCRETE PAVEMENT (3.5" A.C. (R-1/2") OVER 6" A.B.C. OVER COMPACTED SUBGRADE) PER CITY OF MESA STANDARD DETAIL NO. M-19-01.
6. PROTECT EXISTING 7" THICK MAG AA CONCRETE PAVEMENT FROM DAMAGE.
7. SAWCUT AND REMOVE A MINIMUM 2' OF EXSITING A.C. PAVEMENT.
8. CONSTRUCT RESIDENTIAL DRIVEWAY ENTRANCE-TYPE 2 (DETACHED SIDEWALK). CITY OF MESA DETAIL NO. M-40.02.
9. CONSTRUCT CONCRETE SIDEWALK (MAG STANDARD DETAIL NO. 230).
10. INSTALL CONCRETE VERTICAL CURB AND GUTTER (MAG STANDARD DETAIL NO. 220-1, TYPE A).
11. CONSTRUCT CURB TRANSITION (SEE DETAIL ON SHEET OP-5).
12. INSTALL SIDEWALK RAMP TYPE D (CITY OF MESA STANDARD DETAIL NO. M-44.05). MODIFY TO BE 5' WIDE AND HAVE NO ROUNDED CORNERS AT CURB INTERSECTIONS WITH STREET CURBS.
13. REMOVE EXISTING TREES, SHRUBS, LANDSCAPE MATERIAL AS REQUIRED FOR NEW CONSTRUCTION.
14. REMOVE AND SALVAGE EXISTING SIGNS. REMOVE EXISTING POST, AND FOOTING. SEE SIGNAGE AND STRIPING PLANS FOR REINSTALLATION.
15. REMOVE AND SALVAGE EXISTING ANGULAR RIP-RAP AS REQUIRED FOR REGRADING OF NEW SWALE. REGRADE SWALE TO THE ELEVATIONS INDICATED. REINSTALL ANGULAR RIP-RAP.
16. REMOVE EXISTING CATCH BASIN, REMOVE EXISTING STORM DRAIN PIPE AS REQUIRED. INSTALL WATERTIGHT CAP.
17. RELOCATE EXISTING ELECTRICAL BOXES AS REQUIRED FOR NEW CONSTRUCTION.
18. PROTECT EXISTING STREET LIGHT POLE AND BASE FROM DAMAGE.
19. RELOCATE EXISTING 2" WATER METER AND METER BOX FOR NEW CONSTRUCTION. REMOVE EXISTING 2" COPPER PIPE AND INSTALL NEW 2" COPPER PIPE (TYPE K) AS REQUIRED. RECONNECT TO EXISTING WATER LINE WITH NECESSARY AND APPROPRIATE FITTINGS.



COPERNICUS DRIVE

Line Table		
Line #	Length	Direction
L2	331.75'	N46° 48' 09.28"W
L1	36.94'	N00° 29' 40.20"E

Curve Table			
Curve #	Length	Radius	Delta
C1	311.42'	377.61	047.25
C2	42.40'	417.89	005.81



OFFSITE PAVING PLAN

QUEEN CREEK UNIFIED SCHOOL DISTRICT #95

QUEEN CREEK HIGH SCHOOL-
COPERNICUS WIDENING

DRAWING STATUS	SHEET	OF	OP-5
1ST CITY SUBMITTAL			
DATE: 02-05-21	5	15	

HORIZONTAL SCALE: 1"=20'
VERTICAL SCALE: 1"=2'



170805COP4.DWG